



**NCI Center to Reduce
Cancer Health
Disparities
(CRCHD)**

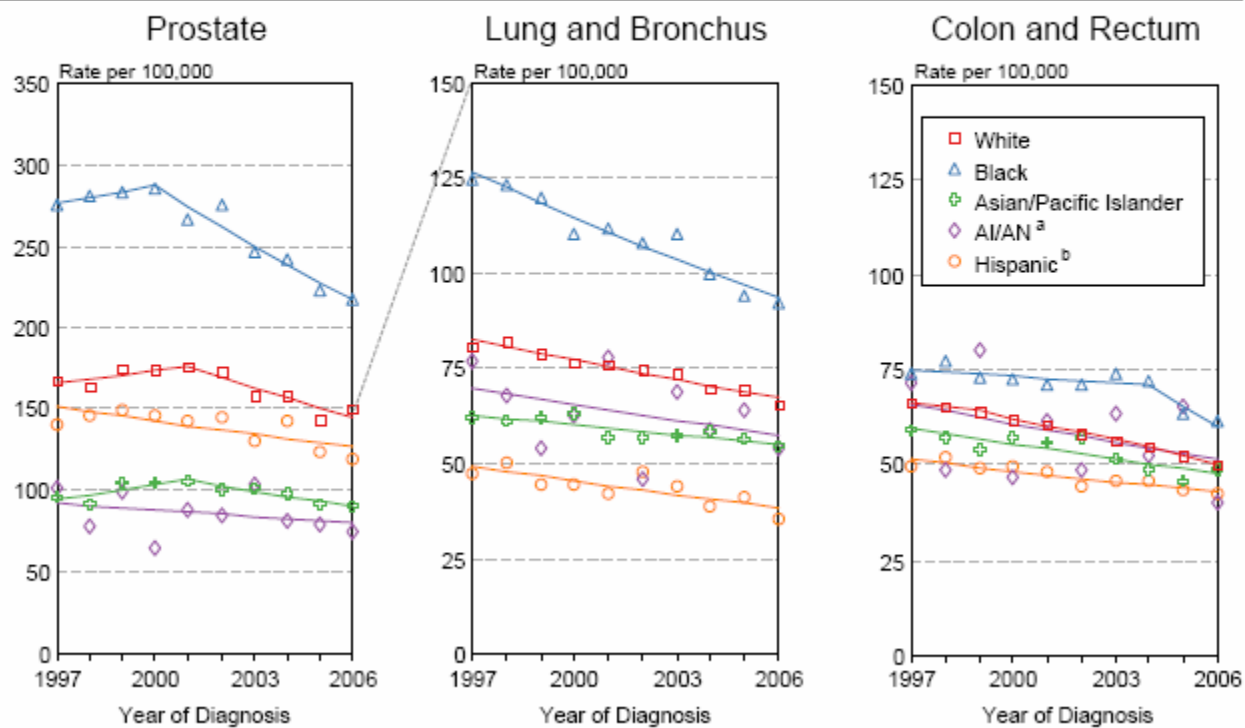


***Asian and Pacific Islander Ethnic Data:
Hidden Dragon***

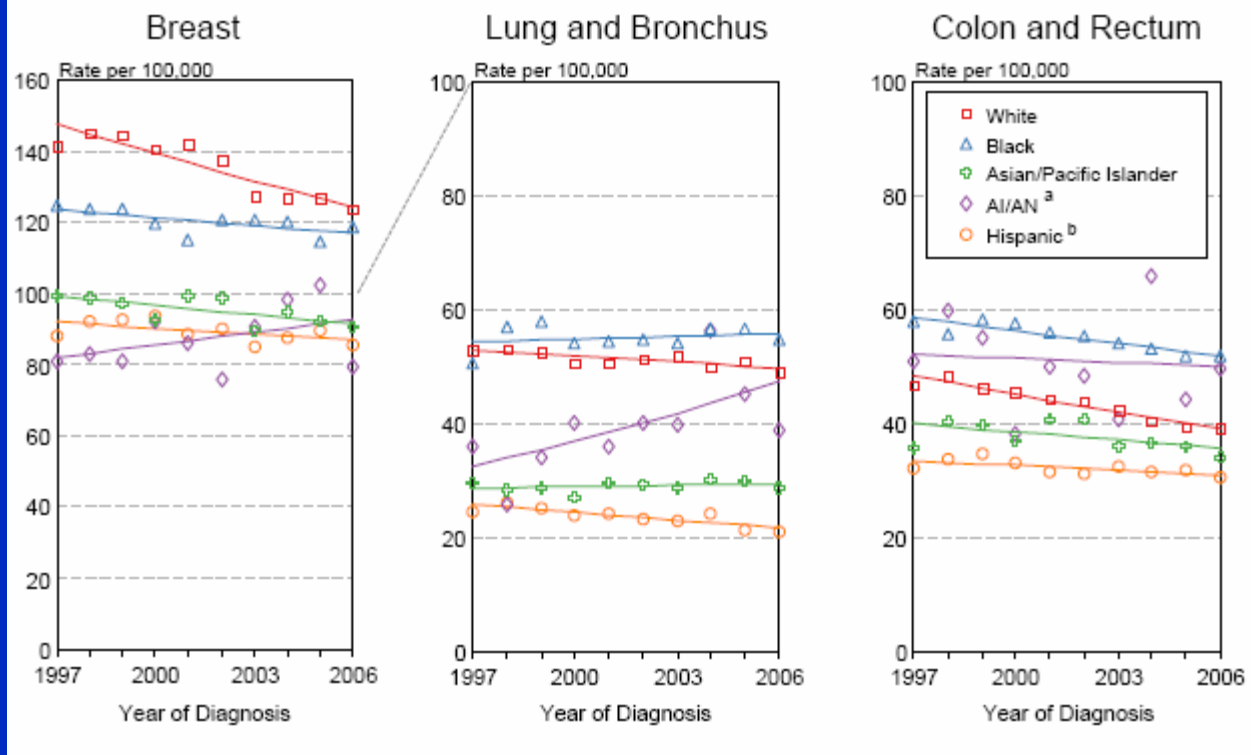


***Dr. Kenneth Chu - Branch Chief
Disparities Research Branch
Center to Reduce Cancer Health Disparities
NCI***

SEER Incidence 1997-2006 Males by Race/Ethnicity



Females by Race/Ethnicity



How often are Asian Ethnic Group Cancer Rates calculated?



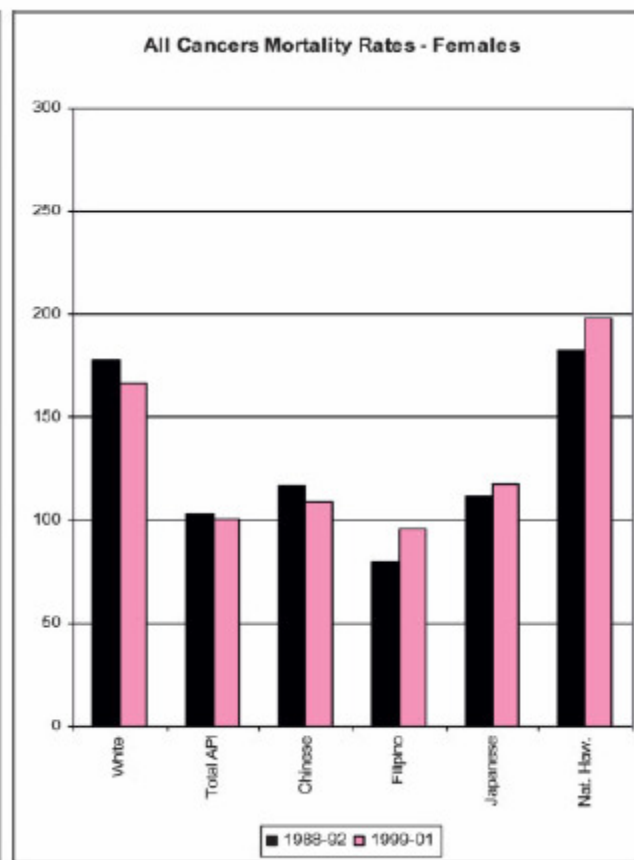
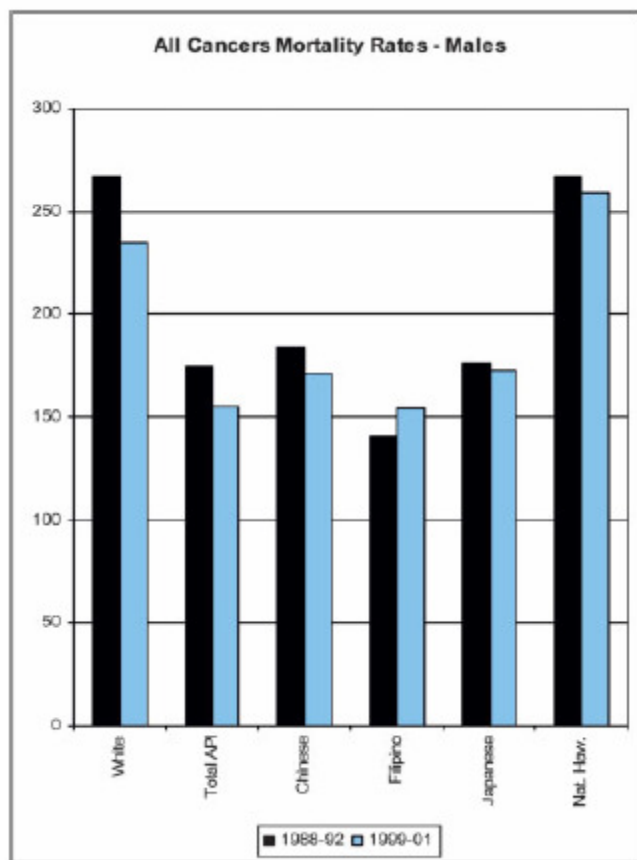
Once every ten years!

INCIDENCE/SURVIVAL DATA

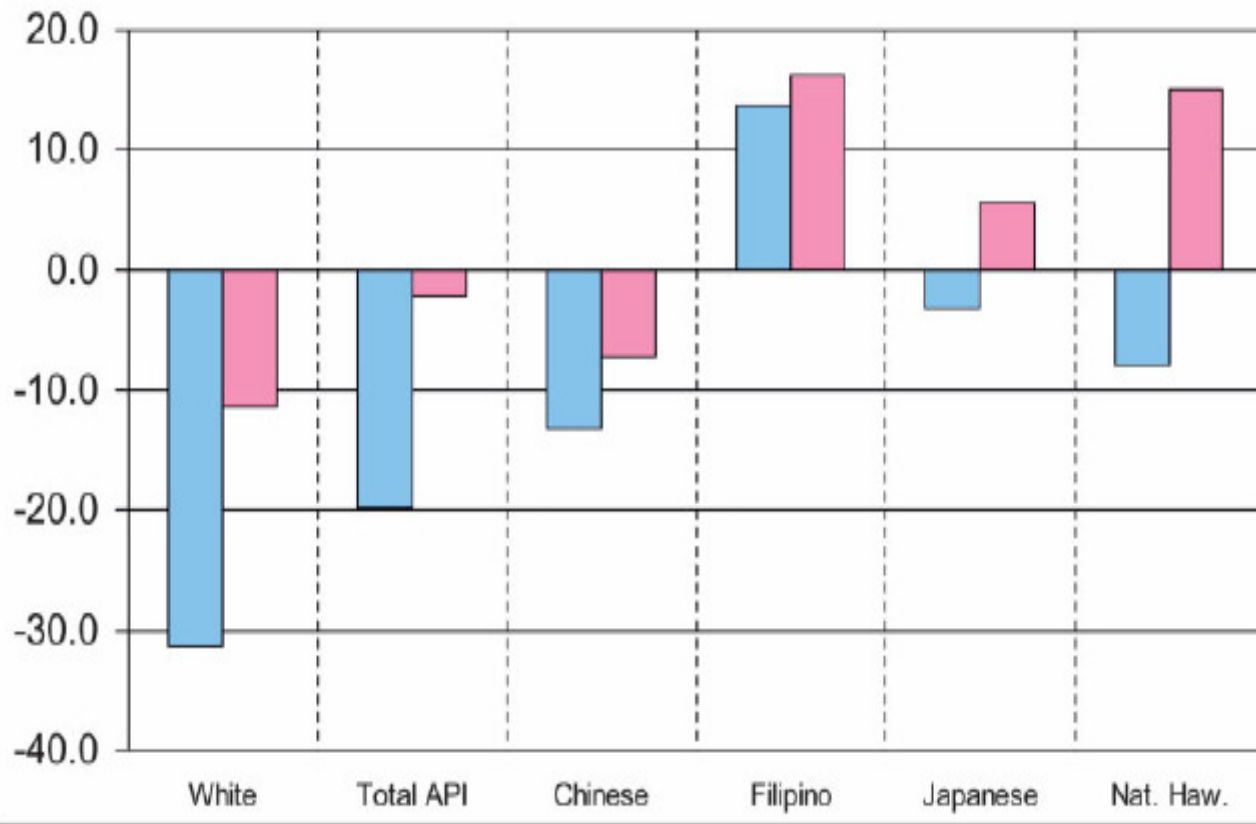
Asian Indian/Pakistani
Chinese
Filipino
Guamanian
Japanese
Kampuchean (Cambodian)
Korean
Laotian
Native Hawaiian
Samoan
Tongan
Vietnamese

MORTALITY DATA

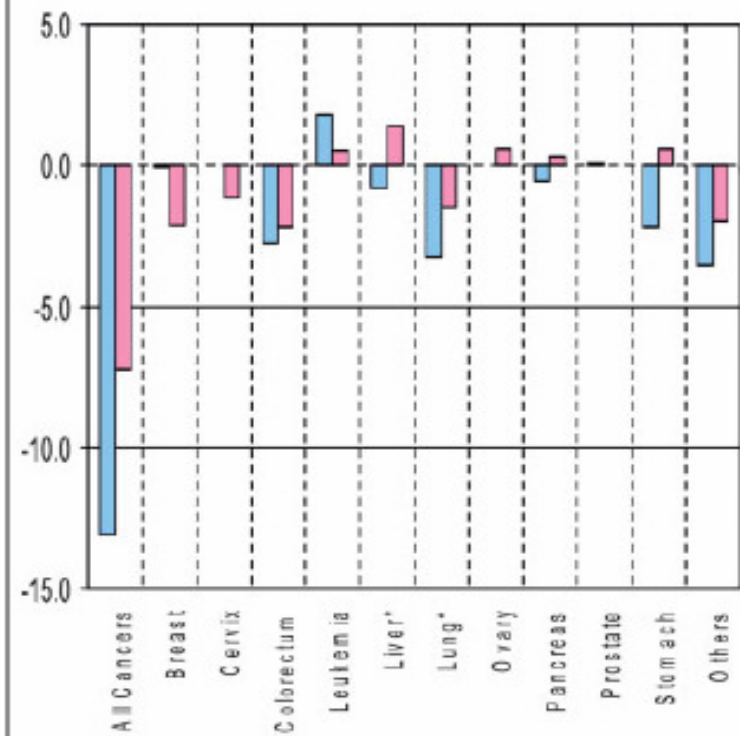
Asian Indian
Chinese
Filipino
Guamanian
Japanese
-
Korean
-
Native Hawaiian
Samoan
-
Vietnamese



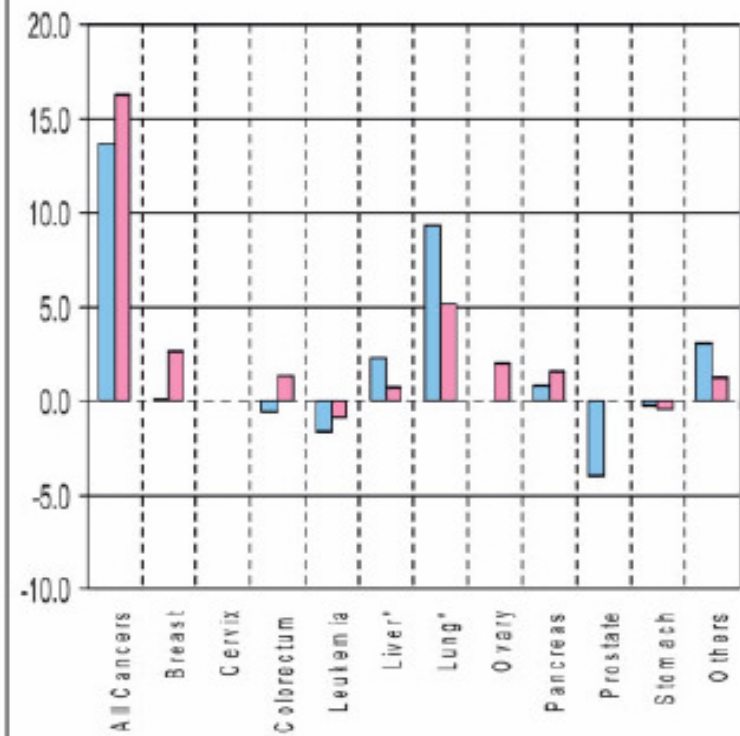
Differences between 1988-92 and 1999-2001 Cancer Mortality Rates

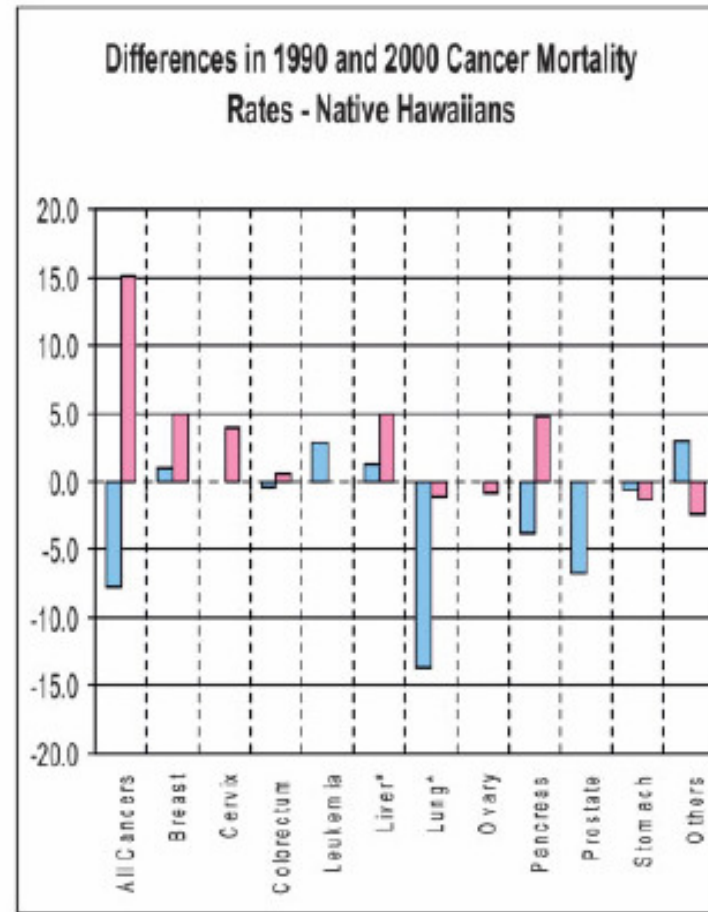
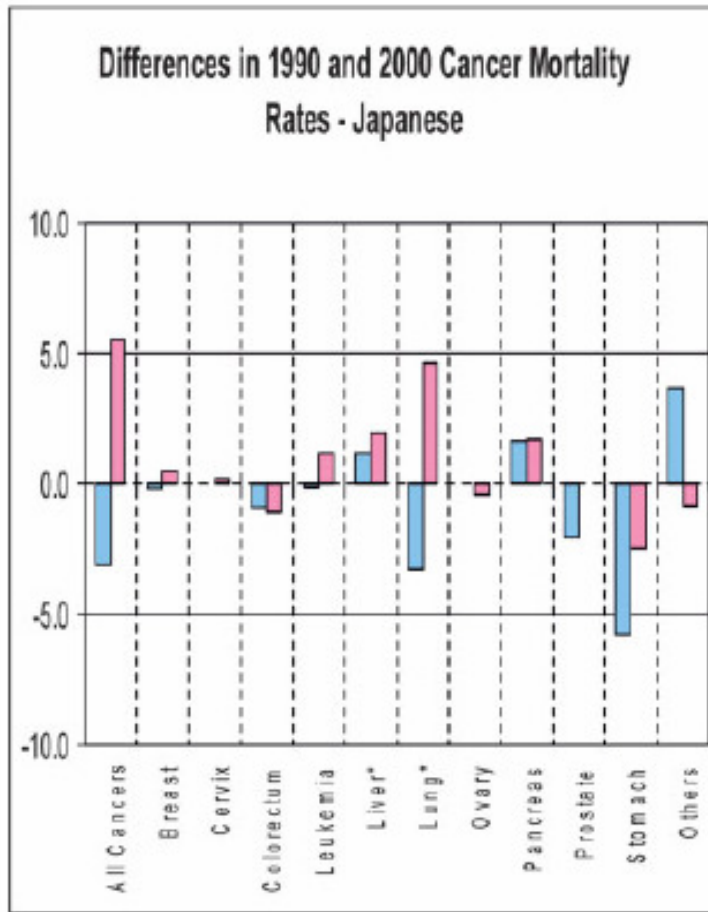


Differences in 1990 and 2000 Cancer Mortality Rates - Chinese

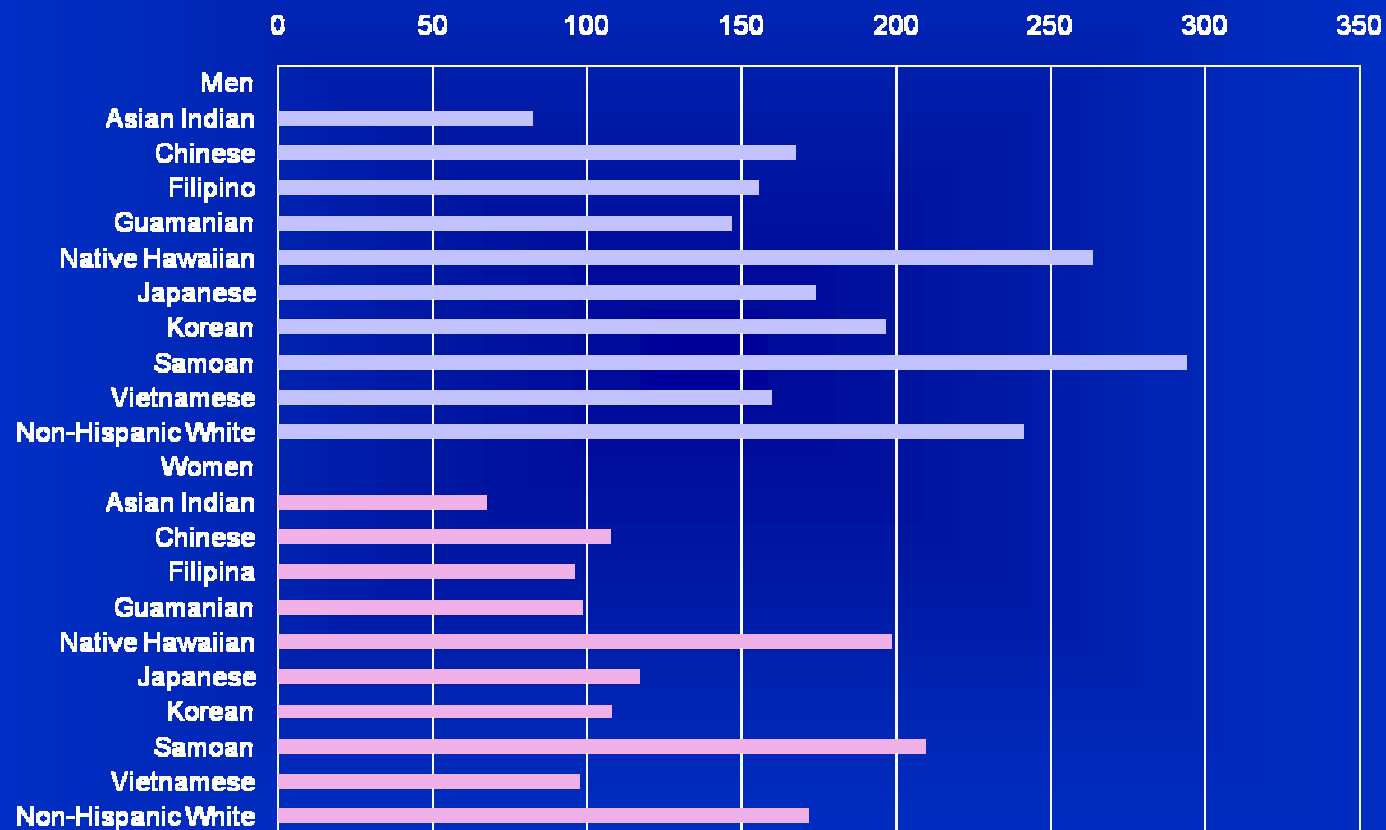


Differences in 1990 and 2000 Cancer Mortality Rates - Filipinos





1998-2002 All Cancers Mortality Rates by Asian Ethnicity



1998-2002 Cancer Mortality Rates - Asian Men

	Asian Indian	Chinese	Filipino	Japanese	Korean	Vietnamese
1	Lung	Lung	Lung	Lung	Lung	Lung
2	Prostate	Liver 3.3	Prostate	Colorec	Stomach 5.4	Liver 5.5
3	Pancreas	Colorec	Colorec	Stomach 2.9	Liver 4.3	Stomach 2.2
4	Liver 0.9	Stomach 2.0	Liver 1.9	Prostate	Colorec	Pancreas
5	Leukemia	Prostate	Non-Hod	Pancreas	Pancreas	Colorec

Cancer Mortality - Native Hawaiians and Pacific Islander Men

	Native Hawaiian	Guamanian	Samoan
1	Lung	Lung	Lung
2	Colorec		Stomach 7.1
3	Prostate		Prostate
4	Stomach 2.4		Liver 5.4
5	Liver 1.9		Colorec

1998-2002 Cancer Mortality Rates - Asian Women

	Asian Indian	Chinese	Filipina	Japanese	Korean	Vietnamese
1	Breast	Lung	Breast	Lung	Lung	Lung
2	Lung	Colorec	Lung	Colorec	Stomach 5.1	Liver 4.0
3	Colorec	Breast	Colorec	Breast	Colorec	Breast
4	Ovary	Liver 2.7	Pancreas	Pancreas	Liver 4.3	Colorec
5	Pancreas	Stomach 2.5	Ovary	Stomach 3.6	Breast	Stomach 2.5

Cancer Mortality - Native Hawaiians and Pacific Islander Women

	Native Hawaiian	Guamanian	Samoan
1	Lung		Lung
2	Breast		Breast
3	Pancreas		
4	Colorec		
5	Stomach 3.7		

Table 2 Top five age-adjusted cancer incidence rates^a and 95% CI by Asian or Pacific Islander subgroup, 1998–2002: Men

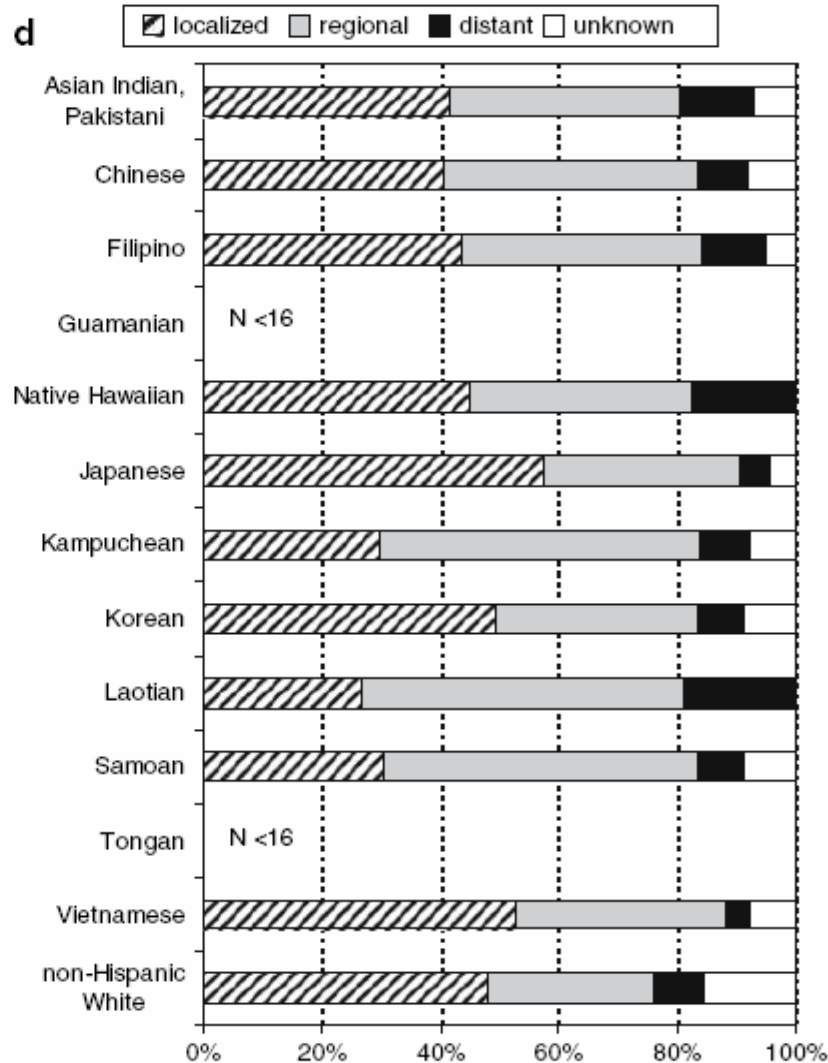
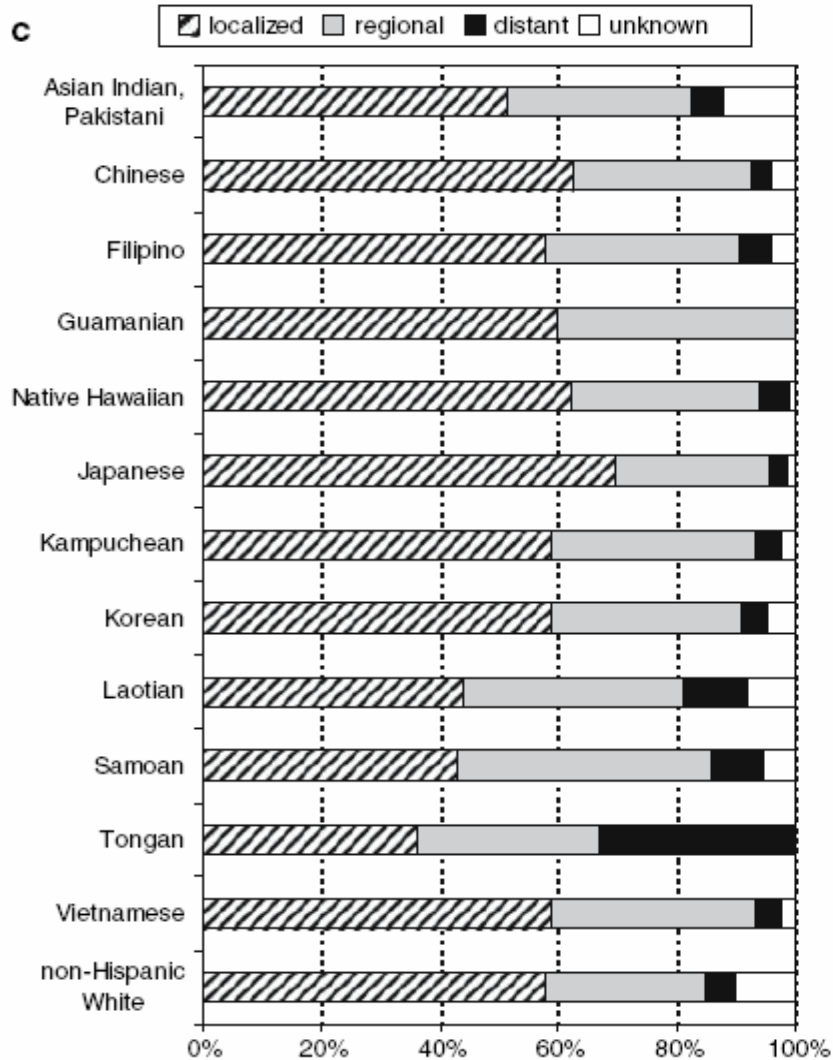
Rank	Asian Indian or Pakistani		Chinese		Filipino				
	Rate	(95% CI)	Rate	(95% CI)	Rate	(95% CI)			
	All cancers	292.1	(277.3, 307.9)	All cancers	348.8	(341.5, 356.2)	All cancers	393.2	(385.0, 401.5)
1	Prostate	98.4	(90.0, 107.7)	Prostate	84.8	(81.2, 88.5)	Prostate	121.9	(117.3, 126.6)
2	Lung	30.8	(25.7, 36.8)	Colorectum	54.0	(51.2, 57.0)	Lung	72.5	(69.0, 76.1)
3	Colorectum	23.1	(19.3, 27.9)	Lung	53.0	(50.1, 56.0)	Colorectum	50.4	(47.5, 53.4)
4	Non-Hodgn	15.8	(12.5, 20.1)	Liver	24.0	(22.1, 25.9)	Non-Hodgn	19.4	(17.7, 21.4)
5	Bladder	15.8	(12.1, 20.5)	Stomach	18.3	(16.6, 20.2)	Liver	17.2	(15.5, 19.0)
	Guamanian		Native Hawaiian ^b		Japanese				
	All cancers	252.1	(189.8, 336.7)	All cancers	531.6	(503.7, 561.1)	All Cancers	422.4	(412.8, 432.3)
1	Prostate	131.5	(85.0, 202.4)	Prostate	119.7	(106.1, 135.1)	Prostate	115.0	(110.1, 120.1)
2	nr			Lung	109.8	(97.4, 123.9)	Colorectal	75.9	(71.9, 80.2)
3	nr			Colorectal	65.7	(56.1, 77.1)	Lung	49.8	(46.6, 53.3)
4	nr			Bladder	21.2	(15.3, 29.1)	Stomach	29.3	(26.9, 32.1)
5	nr			Non-Hodgn	19.6	(14.8, 26.3)	Bladder	22.9	(20.8, 25.4)
	Kampuchean		Korean		Laotian				
	All cancers	372.0	(325.3, 425.5)	All cancers	372.6	(357.4, 388.4)	All Cancers	407.2	(360.7, 460.3)
1	Lung	82.6	(60.1, 112.6)	Lung	61.1	(54.8, 68.2)	Lung	87.3	(64.9, 117.4)
2	Liver	49.1	(36.3, 68.5)	Colorectum	55.9	(50.2, 62.2)	Liver	79.4	(60.7, 105.0)
3	Prostate	39.7	(25.0, 62.2)	Prostate	55.7	(49.8, 62.3)	Stomach	33.1	(19.1, 55.8)
4	Colorectum	30.0	(18.3, 49.5)	Stomach	55.0	(44.6, 56.2)	Prostate	30.9	(18.2, 51.9)
5	Stomach	23.8	(12.1, 44.3)	Liver	35.9	(31.6, 40.8)	Colorectum	30.2	(19.4, 48.8)
	Samoan		Tongan		Vietnamese				

Table 3 Top five age-adjusted cancer incidence rates^a and 95% CI by Asian or Pacific Islander subgroup, 1998–2002: Women

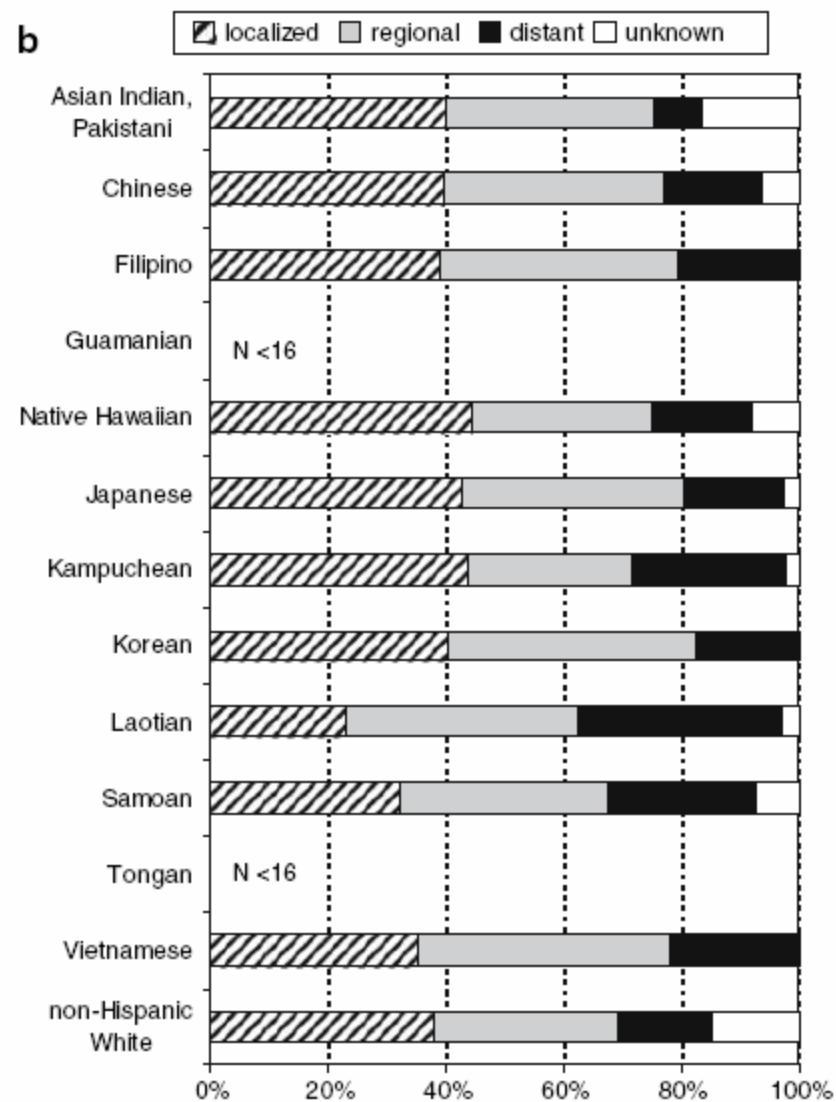
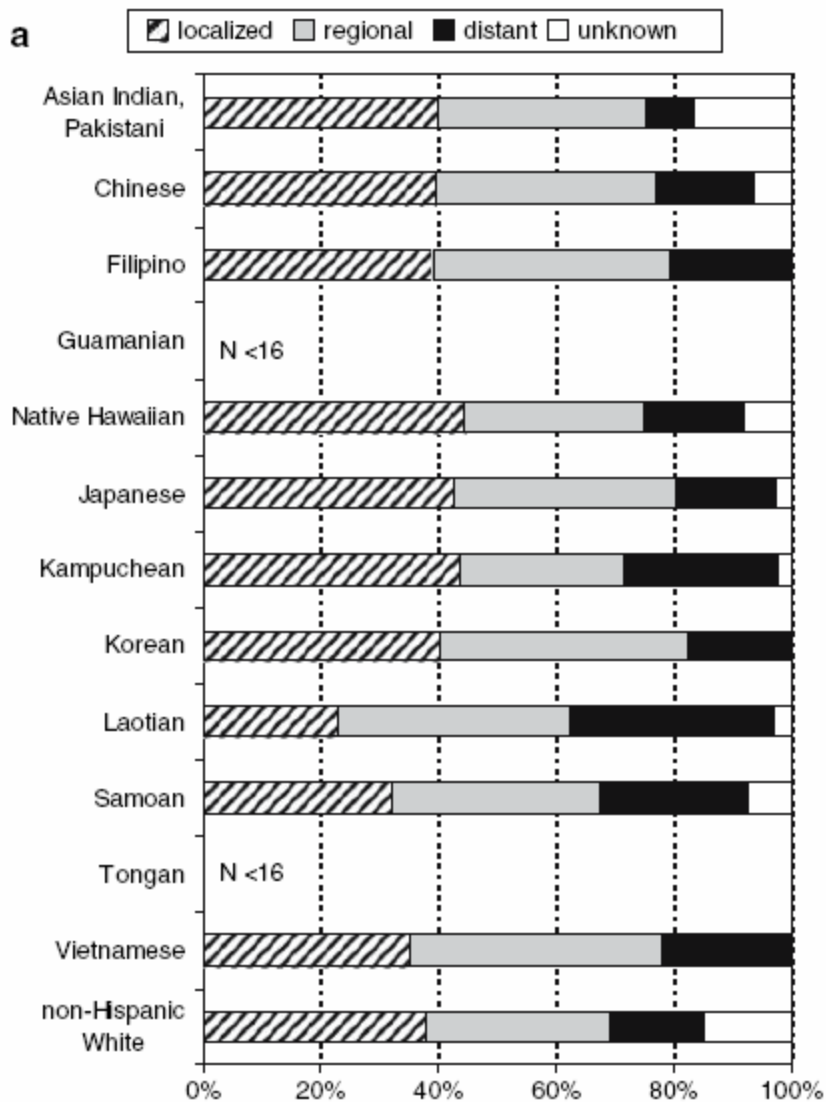
Rank	Asian Indian or Pakistani		Chinese			Filipina			
	Rate	(95% CI)	Rate	(95% CI)		Rate	(95% CI)		
	All cancers	238.1	(226.7, 250.2)	All cancers	270.4	(264.7, 276.2)	All cancers	291.1	(285.3, 297.1)
1	Breast	82.1	(76.1, 88.8)	Breast	77.6	(74.6, 80.6)	Breast	100.4	(97.1, 103.8)
2	Colorectum	18.8	(15.5, 23.0)	Colorectum	40.2	(38.0, 42.5)	Colorectum	29.4	(27.5, 31.4)
3	Endometrium	13.5	(10.9, 16.7)	Lung	29.7	(27.8, 31.7)	Lung	26.0	(24.1, 27.9)
4	Lung	13.1	(10.2, 16.9)	Endometrium	12.0	(10.9, 13.3)	Endometrium	18.6	(17.2, 20.1)
5	Ovary	12.0	(9.7, 15.1)	Stomach	11.1	(10.0, 12.4)	Thyroid	17.7	(16.4, 19.2)
	Guamanian		Native Hawaiian ^b			Japanese			
	All cancers	175.6	(132.7, 233.8)	All cancers	488.5	(466.5, 511.3)	All Cancers	342.4	(334.5, 350.2)
1	Breast	45.0	(28.3, 78.1)	Breast	175.8	(163.0, 189.4)	Breast	126.5	(121.7, 131.5)
2	Lung	40.7	(22.4, 76.4)	Lung	69.7	(61.2, 79.1)	Colorectum	51.9	(49.1, 55.0)
3	nr			Colorectum	44.0	(37.3, 51.6)	Lung	24.7	(22.8, 26.8)
4	nr			Endometrium	37.5	(31.9, 44.1)	Endometrium	20.4	(18.5, 22.6)
5	nr			Pancreas	18.6	(14.3, 23.9)	Stomach	15.0	(13.6, 16.8)
	Kampuchean		Korean			Laotian			
	All cancers	212.3	(185.9, 242.4)	All cancers	254.5	(245.2, 264.1)	All Cancers	297.9	(263.0, 337.1)
1	Breast	38.2	(28.3, 51.8)	Breast	53.5	(49.7, 57.6)	Lung	44.4	(31.2, 62.3)
2	Lung	24.6	(15.6, 37.8)	Colorectum	35.9	(32.3, 39.8)	Breast	36.9	(26.5, 51.5)
3	Colorectum	21.1	(13.1, 33.2)	Lung	27.5	(24.3, 31.0)	Colorectum	27.5	(17.1, 42.7)
4	Cervix Uteri	15.3	(9.3, 25.3)	Stomach	26.3	(23.3, 29.7)	Cervix Uteri	24.8	(16.0, 38.0)
5	Liver	14.1	(7.6, 24.9)	Liver	14.4	(12.2, 17.0)	Liver	23.1	(14.5, 36.4)
	Samoan		Tongan			Vietnamese			
	All cancers	472.0	(421.5, 528.6)	All cancers	504.7	(414.1, 616.6)	All Cancers	270.6	(259.6, 282.2)
1	Breast	102.5	(81.7, 129.5)	Breast	118.0	(78.1, 181.2)	Breast	52.8	(48.6, 57.5)

Stage Distributions of Breast Cancer

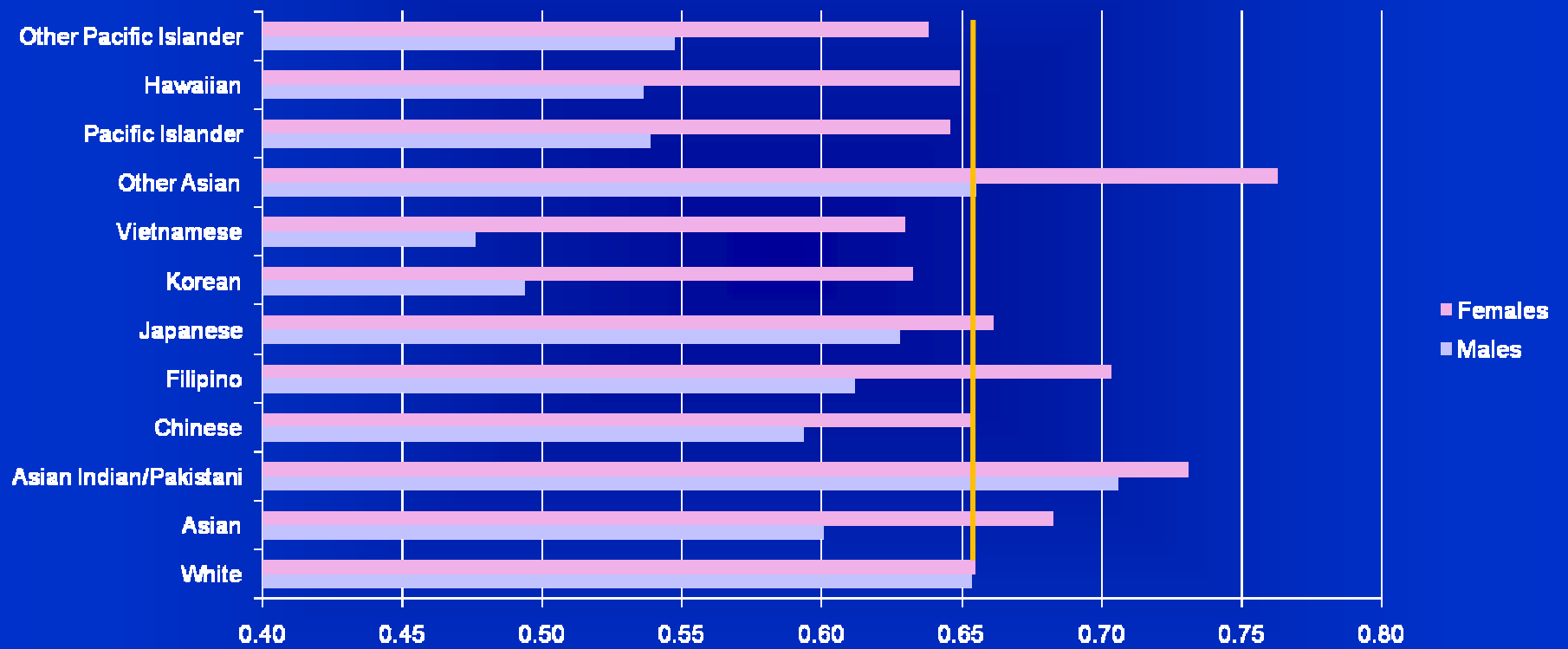
Stage Distributions of Cervical Cancer



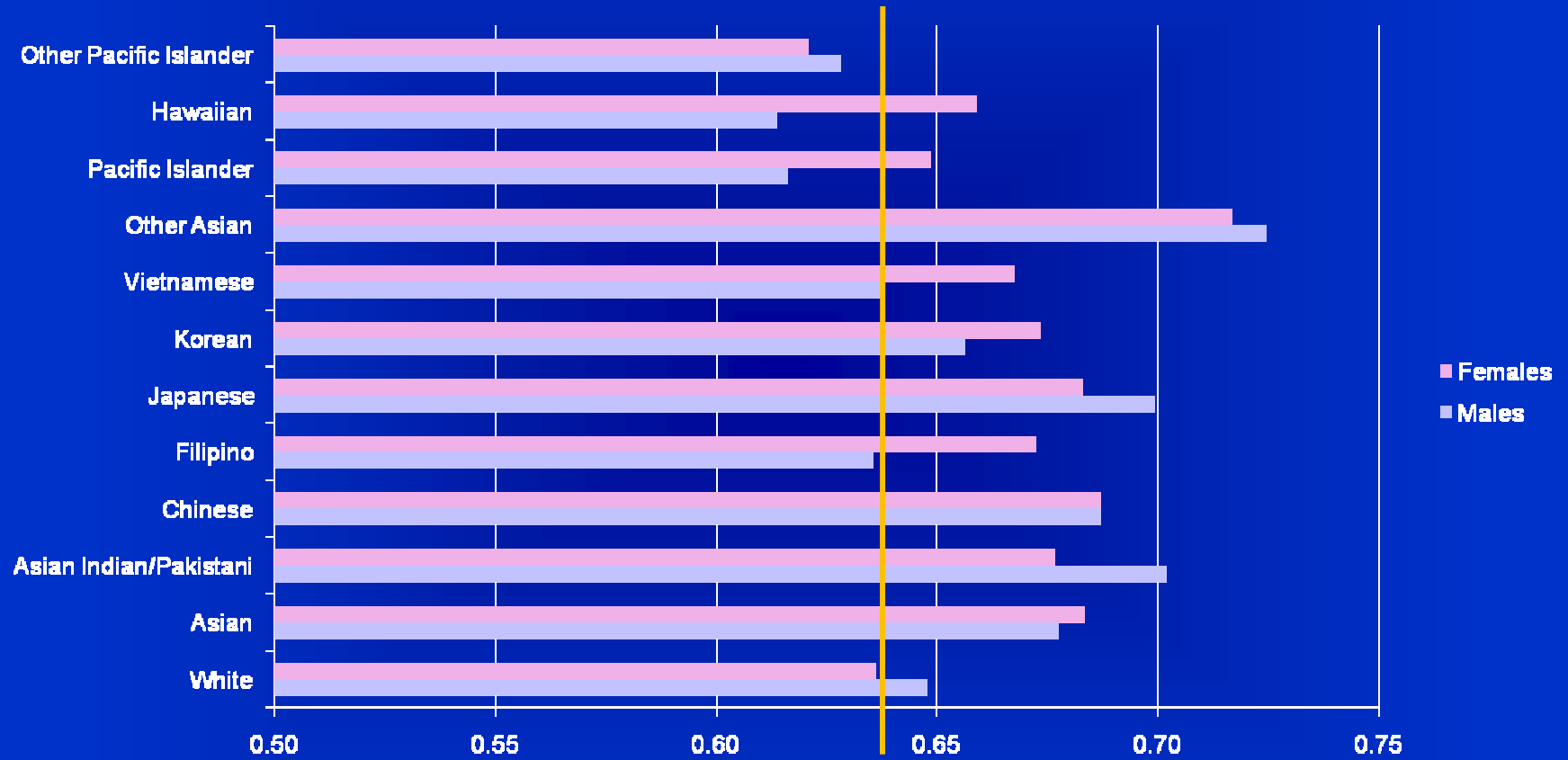
Stage Distribution of Colorectal Cancer



5-Year Survival Rates - All Cancer Sites



5-Year Survival Rates - Colorectal Cancer



Conclusions

- Asian and Pacific Islanders are made up of many ethnic groups.
- Each with its own cancer burden.
- Ethnic cancer rates are only determined once every ten years and it takes about five years after the Census to calculate their rates.
- We need to take the data we currently have to shape the cancer prevention and control program for Asians and Pacific Islanders.